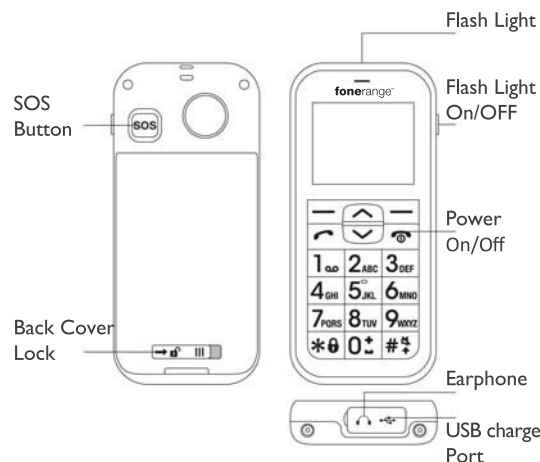


# The Big Friendly Phone by Fonerange User Manual

English Rev. 1.0

## I. Device Overview

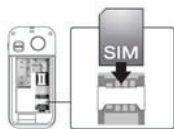


## II. Getting Started

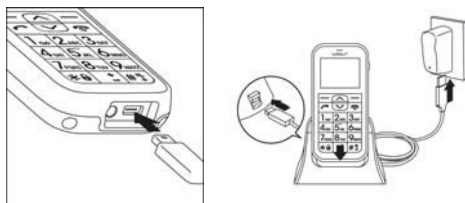
1. Open the back cover as indicated by the arrow.



2. Insert the SIM card as illustrated below. Insert the battery afterwards.

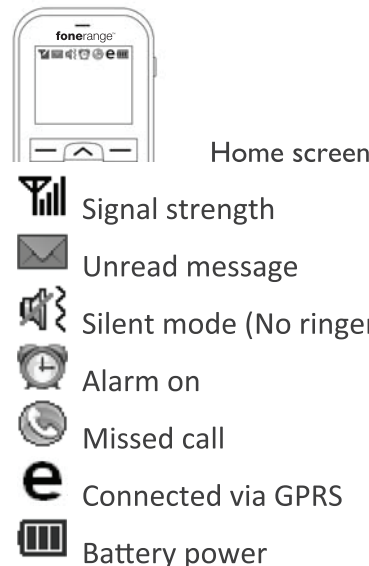


3. Connect the USB charger to the handset or charger cradle. Charge the phone at least 6 hours before first use.



**Note:** The charger cradle may not be included with certain models..

## 4. Symbol Overview on Home Screen



## Please Read Before Proceeding

- THE BATTERY IS NOT CHARGED WHEN YOU TAKE IT OUT OF THE BOX.
- DO NOT REMOVE THE BATTERY PACK WHEN THE PHONE IS CHARGING.
- YOUR WARRANTY IS INVALIDATED IF YOU DISASSEMBLE OR ATTEMPT TO DISASSEMBLE THE DEVICE.

## Privacy Restrictions

Some countries require full disclosure of recorded telephone conversations, and stipulate that you must inform the person with whom you are speaking that the conversation is being recorded. Always obey the relevant laws and regulations of your country when using the recording feature of your phone.

## Limitation of Damages

TO THE MAXIMUM EXTENT PERMITTED BY APPLICABLE LAW, IN NO EVENT SHALL MOBILE ACTION OR ITS PROVIDERS BE LIABLE TO USER OR ANY THIRD PARTY FOR ANY INDIRECT, SPECIAL, CONSEQUENTIAL, INCIDENTAL OR PUNITIVE DAMAGES OF ANY KIND, IN CONTRACT OR TORT,

INCLUDING, BUT NOT LIMITED TO, INJURY, LOSS OF REVENUE, LOSS OF GOODWILL, LOSS OF BUSINESS OPPORTUNITY, LOSS OF DATA, AND/OR LOSS OF PROFITS ARISING OUT OF, OR RELATED TO, IN ANY MANNER, OR THE DELIVERY, PERFORMANCE OR NONPERFORMANCE OF OBLIGATIONS, OR USE OF THE WEATHER INFORMATION, DATA OR DOCUMENTATION HEREUNDER REGARDLESS OF THE FORESEEABILITY THEREOF.

## III. Handset Operation

The Big Friendly Phone by Fonerange offers 8 major functions on the menu:

- [1] Message: edit and send text message.
- [2] Weather: acquire the weather forecast.
- [3] Call Log: log your call history.
- [4] Contacts: keep your contact information in a phonebook.
- [5] Alarm: set up wake-up calls for reminder/notification purpose.
- [6] Health: log your health records.
- [7] Calculator
- [8] Settings: configure basic and advanced settings including Sync, Network, SOS and security settings.

### 3.1 Contacts

Contacts allows you to input 8 photo contacts (quick-dial contact) and 300 general contacts.

#### - Add a General Contact -

1. To add a general contact for the first time, press **[Menu]**, scroll down the menu using the up (↖) and down (↘) arrow keys and select **[Contacts]**, then press **[Add]** to create a new contact. To add a contact to an existing contacts list, press: **[Menu] > [Contacts] > [Options] > [New contact]**.
2. Use the up (↖) and down (↘) arrows to select the field you want to input for this contact, and press **[Edit]**. Select a photo or ringtone for this contact if needed, and press **[Select]** to complete your edits. Press **[Back]** to save the contact information.

#### - Add a Photo Contact for Quick-Dial -

1. Press **[Menu] > [Contacts]**, and you'll see 8 sets of photo contacts that can be edited as quick-dial contacts. Scroll down 1 through 8, and press **[Edit]** to edit the contact information.
2. To change the photo for photo contacts, you have to first login to The Big Friendly Phone by Fonerange server ([www.fonerange.com/setup](http://www.fonerange.com/setup)), and import the photos (up to 30 photos) from your computer. Start synchronizing the data from The Big Friendly Phone by Fonerange server to your phone, and you may update the photo on your phone. Ringtone can also be updated the same way via data synchronization with The Big Friendly Phone by Fonerange server. (See 3.6 for more details about data synchronization)
3. To make a quick-dial call, you can press the up (↖) and down (↘) arrow keys on the main screen, and press the number (1 to 8) of photo contact from the list to make the call quickly.

### 3.2 Alarm

Alarm allows you to set up 1 wake-up alarm and 3 additional alarms (Alarm 1-3) for general purposes. Each of Alarm 1 -3 further allows you to set up 4 different sub-alarms for reminders and notifications at different times, which is good for recoding health-check measurements.

#### - Set up Wake-up Alarm -

Press **[Menu] > [Alarm]**, and select **[Wake-up alarm]**.

#### - Set up Alarm 1-3 -

1. Press **[Menu] > [Alarm]**, and select **[Alarm 1]**, **[Alarm 2]** or **[Alarm 3]**.
2. Each of Alarm 1-3 allows you to further set up 4 different sub-alarms for reminders of various purposes. To set up an alarm for health-check measurement purpose, you may select: **[Alarm 1-3] > [Health Record]**, select

the health-check item that you want to be reminded of (i.e. blood pressure, pulse rate, blood sugar, etc.).

- When the alarm rings, stop the ringing, and you'll be prompted to enter the measurements you got for the selected health-check items previously.

### 3.3 Health

Here you can input the measurements of your health-check items and view your history records in 7 days, 30 days or one year:

- Press **[Menu]**, and select **[Health]**.
- Select one of the listed health-check options to input data or view history records.

### 3.4 Weather

To acquire the real-time weather of your current location, you may:

- Press **[Menu]**, and select **[Weather]**. The weather report will be obtained shortly and displayed on the screen.

**Note:** To acquire the weather report, your phone must be able to access the Internet via GPRS connection by your mobile service provider. See Network Connectivity section for more details on setting up your network via GPRS connection.

- To check the weather forecast of your location, you may press **[Options]**, and select **[Tomorrow]**, **[The day after tomorrow]** or **[Three days from now]**, or simply scroll up or down with the arrow keys to see the weather report of different dates.
- To change the location for weather query, you may press **[Options]**, select **[Location]** > **[Other country]**, choose a country from the list, and then choose a city in your preference.

### 3.5 Advanced Settings

#### 3.5.1 Network Connectivity

- Press **[Menu]**, and select **[Settings]** > **[Advanced settings]** >

**[Network settings]** > **[Connectivity]** > **[Internet settings]**.

- A list of service provider's names pre-configured for your phone's mobile service plan will then appear for selection. Select an option from the list to complete your setup, or select **[User defined]**, and press **[Options]** > **[Edit]** to input your account information manually for Internet access.

**Note:** Please contact your service provider for details of your network settings (GPRS connection).

#### 3.5.2 SOS Settings – Call-outs

- Press **[Menu]**, and select **[Settings]** > **[Advanced settings]** > **[SOS settings]**.
- Select **[SOS recipient]** to input up to 5 sets of phone number for SOS call-out.
- Select **[Position info]**, and determine whether or not your position information should be included in the SOS message to be sent out.
- Select **[SOS message]** to edit the content of SOS message to be sent out in case of emergency.

#### 3.5.3 SOS Settings – Call-ins

In addition to SOS call-outs, you can also receive SOS call-ins in case of emergency while the phone is switched off. To do so, press **[Advanced settings]** > **[Special Control]** > **[Power-off mode]** and check the **[Allow SOS call-in]** option.

**Note:** Please make sure the battery is removed during a flight to avoid unexpected SOS call-ins.

#### 3.5.4 Security

- Press **[Menu]**, and select **[Settings]** > **[Advanced settings]** > **[Security]**.
- Select **[Server Info]**, and you may see the default password for your web access, and the web address of The Big Friendly Phone by Fonerange server ([www.fonerange.com/setup](http://www.fonerange.com/setup)) where you can log in.
- Select **[Advanced setting password]**,

and you may change the password for your login at The Big Friendly Phone by Fonerange server ([www.fonerange.com/setup](http://www.fonerange.com/setup)).

- Select **[PIN Code]**, and you can change the PIN code of the SIM card, and enable **[PIN check]** at power-on for better security.

#### 3.5.5 Menu Control

Functions that appear on the main menu can be customized. Press **[Menu]**, and select **[Settings]** > **[Advanced settings]** > **[Menu control]**. Select and enable the function(s) in your preference. Consequently, the main menu will then only contain enabled functions.

#### 3.5.6 Undisturbed Interval

To avoid any incoming calls during some certain periods, you may set up undisturbed intervals to prevent the phone from receiving calls. To do so:

- Press **[Menu]**, and select **[Settings]** > **[Advanced settings]** > **[Special control]** > **[Undisturbed interval]**.
- Select a day of the week, and press **[Options]** > **[Edit]** to further set up the time period (up to 6 periods) when you do not want to be disturbed.

### 3.6 Synchronization with The Big Friendly Phone by Fonerange Server

The Big Friendly Phone by Fonerange allows you to synchronize data between the phone and The Big Friendly Phone by Fonerange server in 3 different ways:

#### - Start to Sync -

- Login to [www.fonerange.com/setup](http://www.fonerange.com/setup) with your IMEI/name and password (which can be found in your phone: **[Advanced settings]** > **[Security]** > **[Server Info]**).
- Configure all the information on The Big Friendly Phone by Fonerange server as you do on your handset, such as upload ringtones, add new contacts, change wallpaper, view health information, set up alarm, etc.

- On your phone, press **[Menu]**, select **[Advanced settings]** > **[Sync settings]** and enable **[Remote sync]**.
- In **[Sync settings]**, select **[Sync data]** to choose the type of data you want to synchronize between the phone and The Big Friendly Phone by Fonerange server.
- On the phone, select **[Start to Sync]** to start synchronizing configurations to your account on The Big Friendly Phone by Fonerange server.

#### - Set up Sync Period -

In **[Sync settings]**, select **[Sync period]** and determine whether you want data to be synchronized **[By request]**, **[Daily]**, or **[Weekly]**.

#### - Sync via SMS by SOS contact -

Data synchronization can be done via a SMS sent from one of your SOS contact numbers. Ask one of your SOS recipients to send you a text message including only **SYNC** (regardless of upper or lower case) in message content, and the phone will start data synchronization automatically as soon as the message is received.

### SAR Information

Band	Position	SAR 10g (W/kg)
GSM 900	Head	0.311
	Body(1.5cm Gap)	0.175
GSM 1800	Head	0.414
	Body(1.5cm Gap)	0.205

### WEEE



#### ■ Note on environmental protection:

After the implementation of the European Directive 2002/96/EU in the national legal system, the following applies:

Electrical and electronic devices may not be disposed of with domestic waste.

Consumers are obliged by law to return electrical and electronic devices at the end of their service lives to the public collecting points set up for this purpose or point of sale. Details to this are defined by the national law of the respective country. This symbol on the product, the instruction manual or the package indicates that a product is subject to these regulations. By recycling, reusing the materials or other forms of utilizing old devices, you are making an important contribution to protecting our environment.